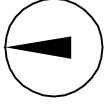


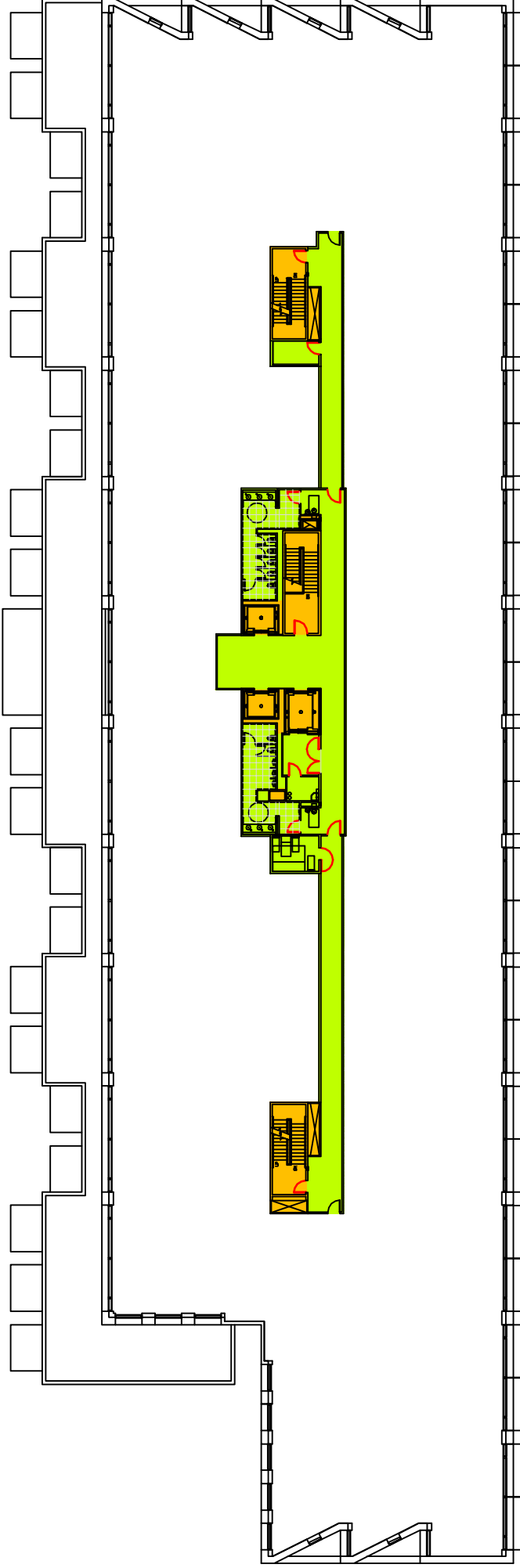
gross floor area	42,004 SF
gross measured area	40,651 SF
major vertical penetrations	1,002 SF
building common area	5,125 SF
floor common area	2,435 SF
office area USF	32,089 SF

SKYSONG 2

1st FLOOR

09.20.2007





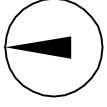
gross floor area	37,828 SF
gross measured area	36,042 SF
major vertical penetrations	1,175 SF
floor common area	2,955 SF
office area USF	31,912 SF

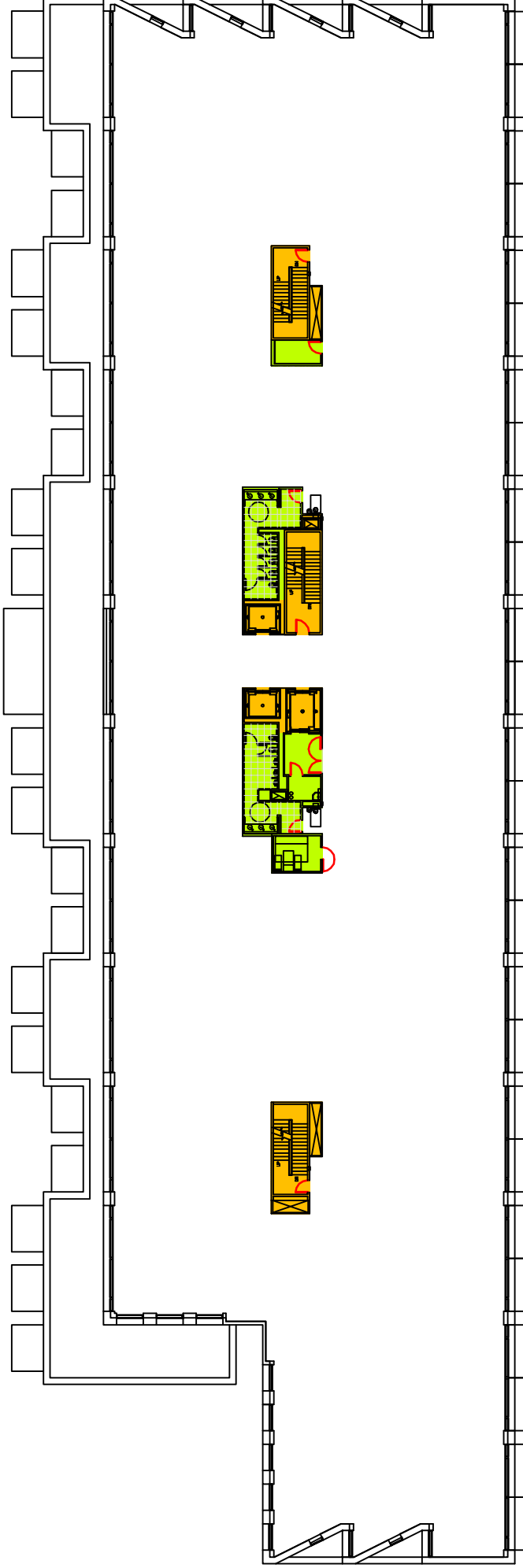
SKYSONG 2

multi-tenant

3rd FLOOR

09.20.2007





gross floor area	37,828 SF
gross measured area	36,042 SF
major vertical penetrations	1,175 SF
floor common area	1,020 SF
office area USF	33,847 SF

SKYSONG 2

single-tenant

4th FLOOR

09.20.2007

